

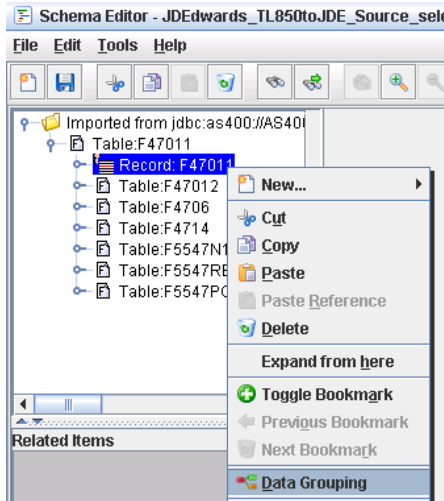
# Creating an Application Analysis Ruleset

## 1 UPDATING SCHEMA FOR DATA GROUPING

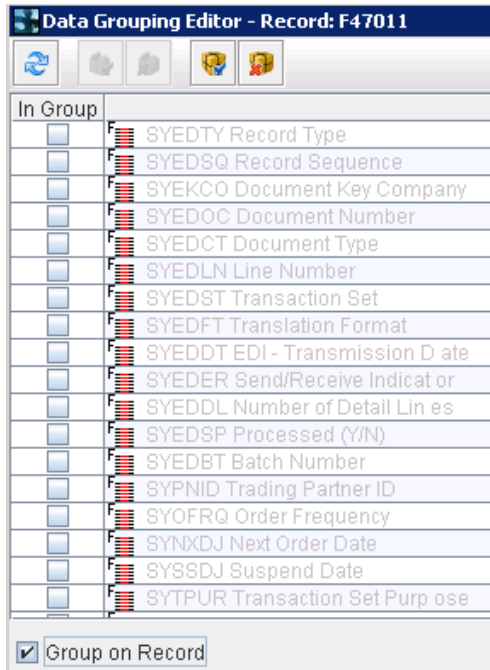
---

The first step we will need to take is updating the source Schema, **JDEdwards\_TL850toJDE\_Source\_select version 2.0.**

When you open the schema the EBI user will want to right- click the header record **F47011** and click on **Data Grouping.**



Once that is done a box will appear. In here click on the **Group on Record** checkbox at the bottom of the box. Then hit **Ok** and save the schema.

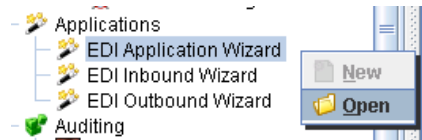


## 2 CREATING THE APPLICATION ANALYSIS RULESET

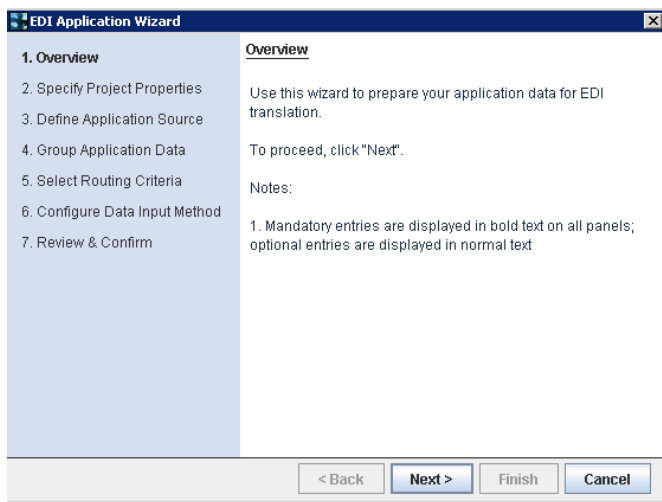
---

### 2.1 STEP 1

Once the schema has been updated for Data Grouping. Go to the Workbench and open the **EDI Application Wizard**.

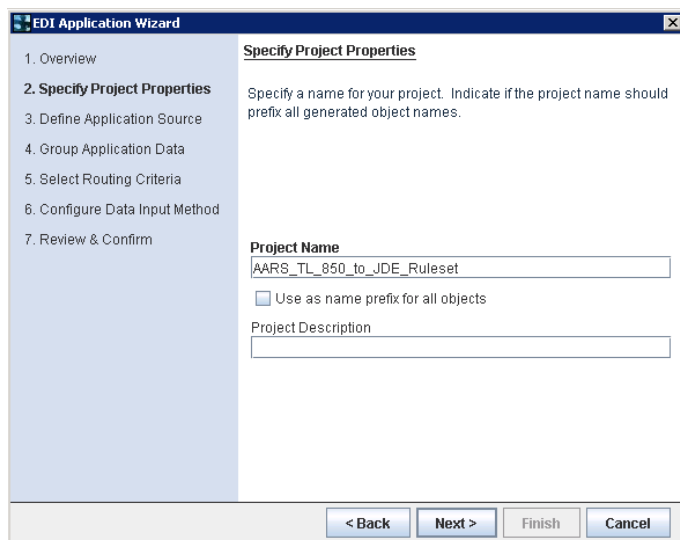


On the next window click **Next**.



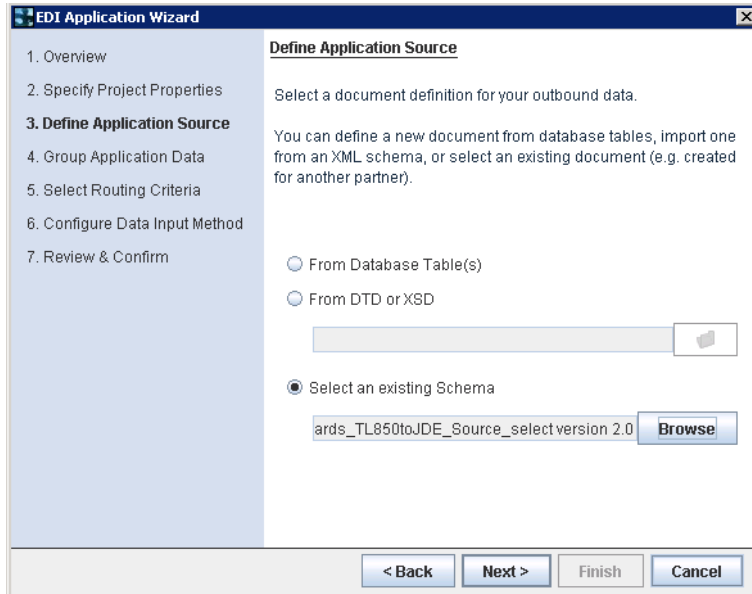
### 2.2 STEP 2

Now the EBI user will be asked for a project name. We will just add an AARS in front of **TL\_850\_to\_JDE\_Ruleset** since that is ruleset it is related to. Once filled in click **Next**.



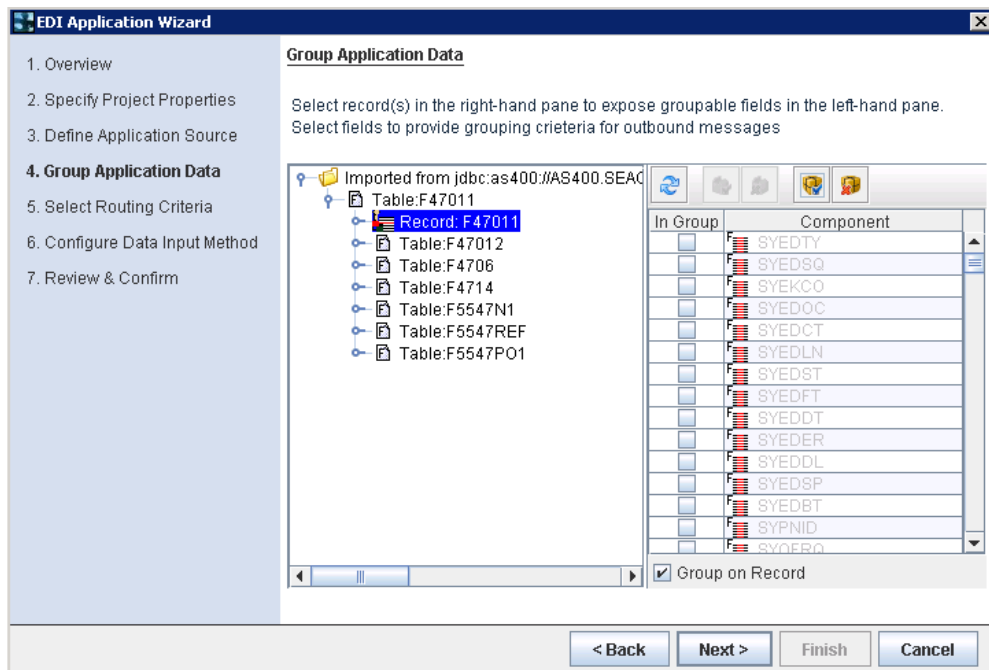
## 2.3 STEP 3

On step 3 the EBI user will need to click the **Select an existing Schema** option. The schema for the AARS we will be using is the **JDEdwards\_TL850toJDE\_Source\_select version 2.0** schema. Once selected hit **Next**.



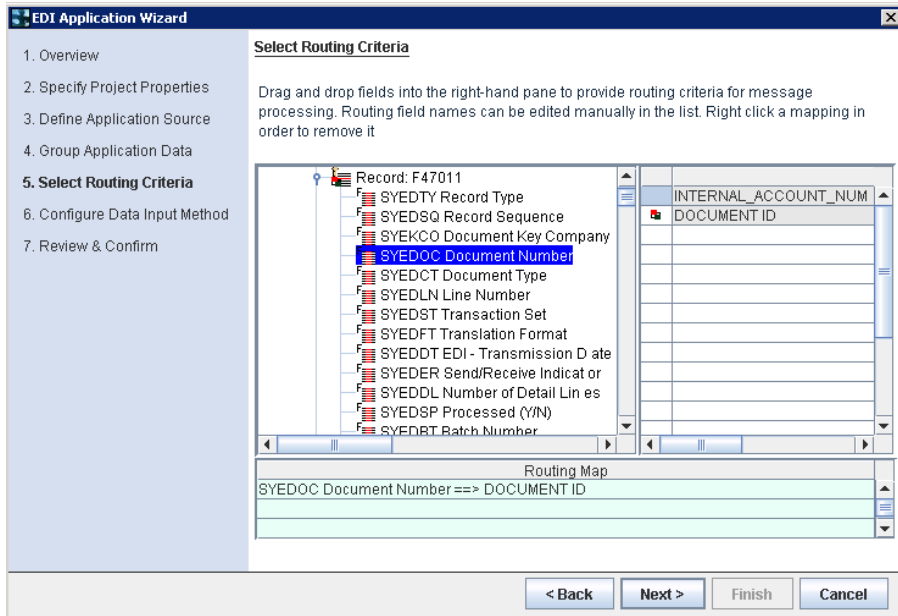
## 2.4 STEP 4

Since we already updated the schema to **Group on Record**. On step 4 all we have to do is highlight **Record F47011** and hit **Next**.



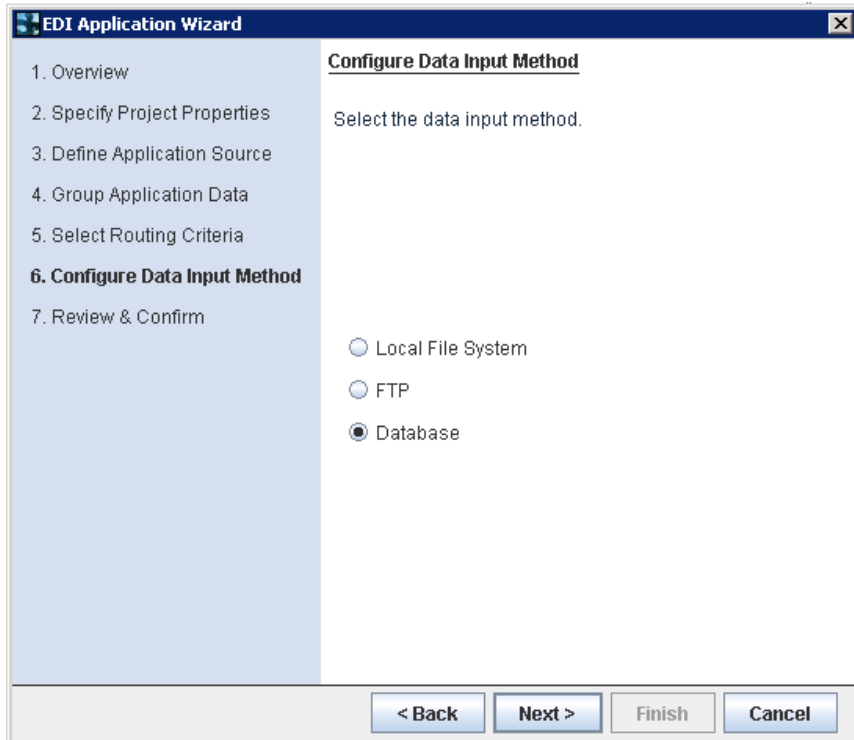
## 2.5 STEP 5

On step 5 we do not really need to do anything here because we will not be using any of these values. Just drag a dummy value over to either of the choices and hit **Next**.

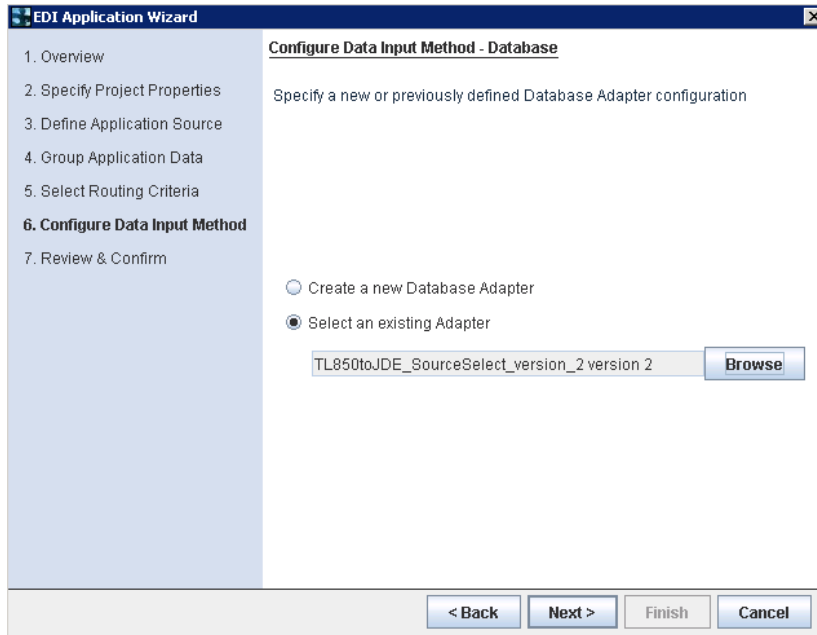


## 2.6 STEP 6

This step will have two windows for the same step. The first box we just need to select **Database** and hit **Next**.

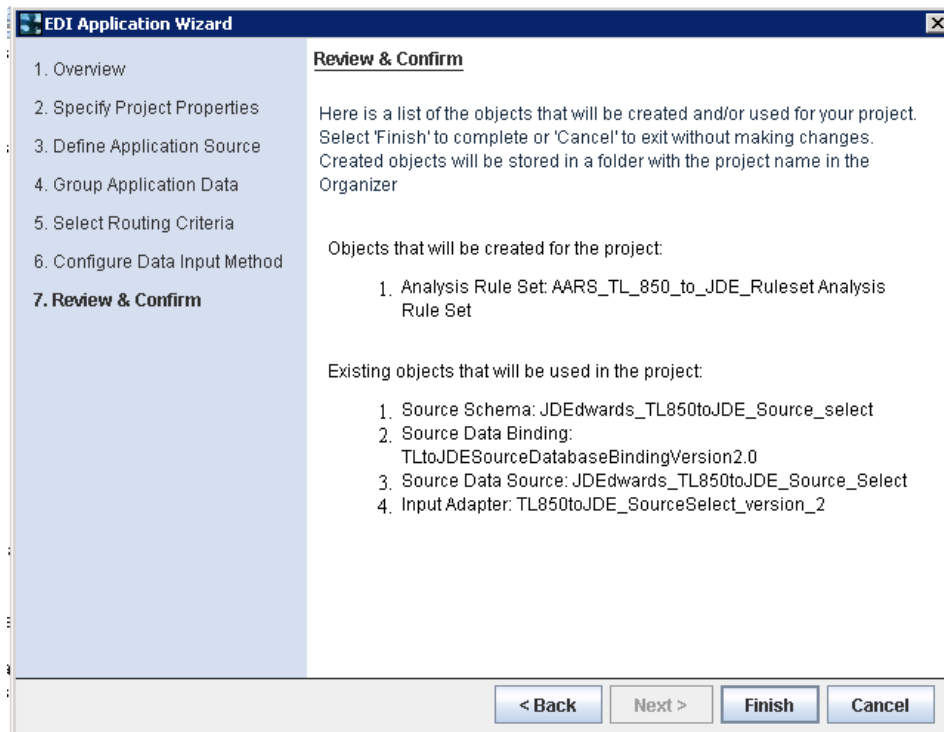


On the next window we are going to choose **Select an existing Adapter**. Choose the select adapter  
Once selected hit **Next**.



## 2.7 STEP 7

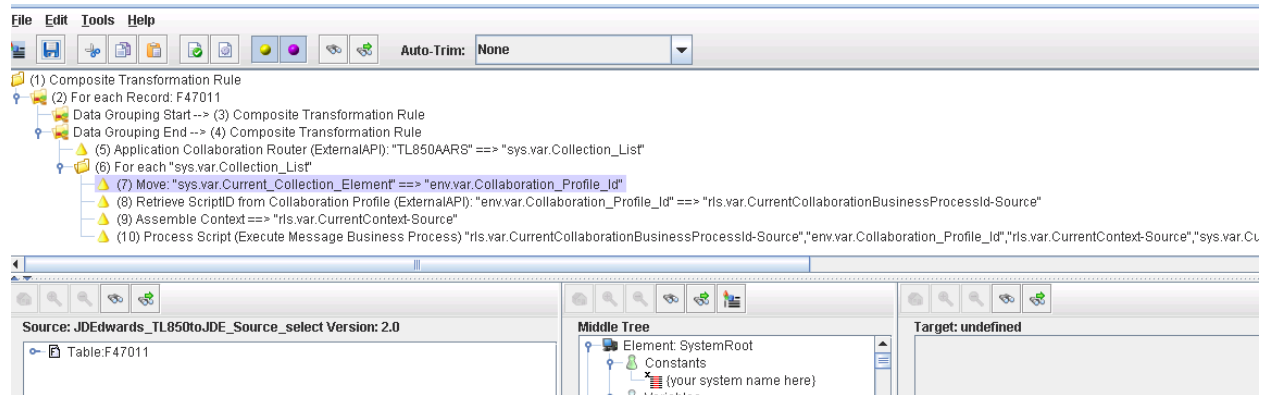
On the last step the EBI user just needs to review and confirm all their choices. It will show what objects will be created also. Hit **Finish** when done and the Application Analysis Ruleset will be created.



### 3 AARS CREATED

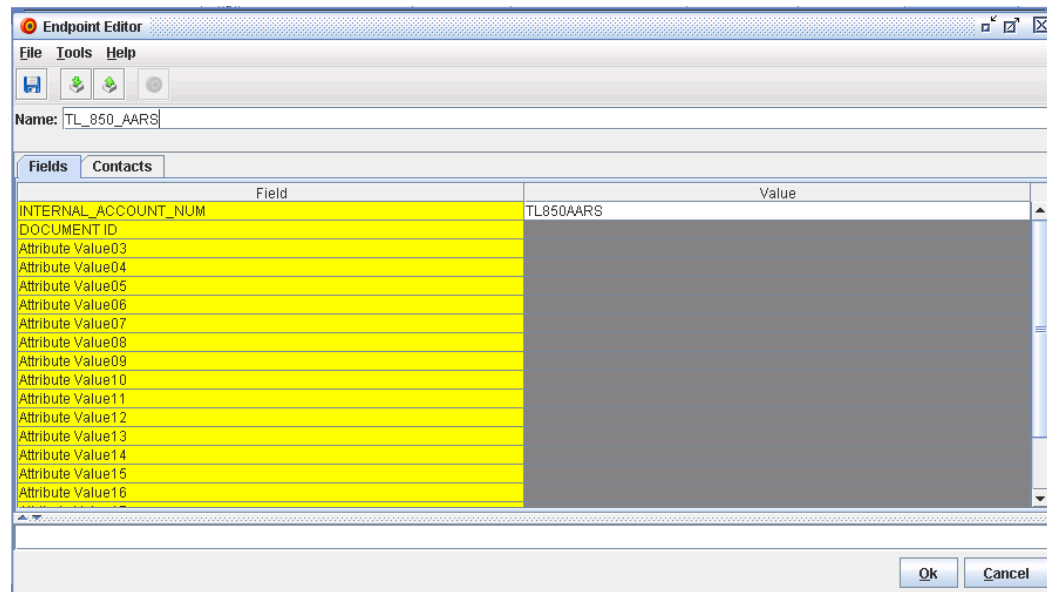
Once the **EDI Application Wizard** is complete. The ruleset **AARS\_TL\_850\_to\_JDE\_Ruleset – Application Analysis** will be created.

When in the ruleset delete the dummy value dragged over during step 5. Then in rule 5, where the **Application Collaboration Router (ExternalAPI)** is you will move a value into the first field. This value will then be placed in the Dummy Endpoint. For this example, we will be moving TL850AARS into the first field.



### 4 CREATE THE DUMMY ENDPOINT

The next step just requires an application endpoint to be made so the Collaboration has one. The values in the endpoint need to match the ones you moved into the **Application Collaboration Router (ExternalAPI)**. Here I named the endpoint, **TL\_850\_AARS\_DUMMY**.



## 5 RECREATING THE BUSINESS PROCESS IN OUTBOUND COLLABORATIONS

The next step is to recreate the **TL\_850\_to\_JDE\_Business\_Process\_021114** Business Process inside the **EXTOL – Template – Outbound Collaboration Processor**.

Here I just renamed the Business Process the same and just changed the date. I also added SRH on to the version. The Business Process is now **TL\_850\_to\_JDE\_Business\_Process\_092914 version 1.0 SRH**. All that is removed from the Business Process is the Select adapter and the Has Data task. These will be moved to the Application Analysis Ruleset Business Process.

Script:

Label	Task	Pass	Fail
	Set Collaboration Parameter Values	NEXT	FAILURE
	Execute Transformation - Single Output	NEXT	FAILURE
	Execute Adapter: insert using JDEdwards_TL850toJDE_Target_Insert ver. 1...	NEXT	FAILURE
	Execute Adapter: update using JDEdwards_TL850toJDE_Source_Update ver...	NEXT	FAILURE
SUCCESS	Set Exit Status	END	END
FAILURE	Set Exit Status	END	END

## 6 CREATING THE APPLICATION ANALYSIS BUSINESS PROCESS

Here we are going to need an Application Analysis Business Process to run the Application Analysis Ruleset we created earlier. For this we can just copy the original Business Process, **TL\_850\_to\_JDE\_Business\_Process\_021114**. Once copied rename it to include AARS in the name such as **TL\_850\_to\_JDE\_AARS\_Business\_Process\_092914**.

For this Business Process we will remove the **Insert** and **Update** adapters. Also we will need to change the **Ruleset** in the Business Process to the Application Analysis ruleset we made earlier.

Business Process Editor - TL\_850\_to\_JDE\_AARS\_Business\_Process\_092914 version 1.0 SRH

File Tools Help

Script:

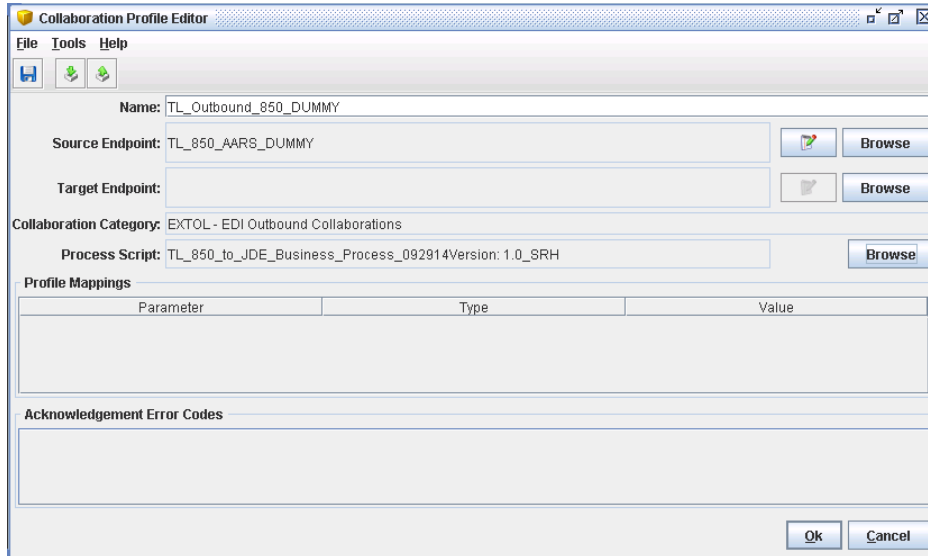
Label	Task	Pass	Fail
Tag:1	Execute Adapter: TL850toJDE_SourceSelect_versi...	NEXT	EXIT_FAIL
Tag:4	Has Data	NEXT	EXIT_PASS
Tag:2	Execute Transformation - Single Output	NEXT	EXIT_FAIL
EXIT_PASS	Set Exit Status	END	END
EXIT_FAIL	Set Exit Status	END	END

## 7 CREATING A DUMMY COLLABORATION

---

Now we will need to create a dummy Collaboration that will run when we launch **TL\_850\_to\_JDE\_AARS\_Business\_Process\_092914**. Here I just named it **TL\_Outbound\_850\_DUMMY**.

Just attach the dummy Application endpoint, **TL\_850\_AARS\_DUMMY**, to the Source Endpoint. Then attach the **TL\_850\_to\_JDE\_Business\_Process\_092914** Business Process.



The screenshot shows the 'Collaboration Profile Editor' dialog box. The 'Name' field is filled with 'TL\_Outbound\_850\_DUMMY'. The 'Source Endpoint' field is filled with 'TL\_850\_AARS\_DUMMY' and has a 'Browse' button to its right. The 'Target Endpoint' field is empty and has a 'Browse' button to its right. The 'Collaboration Category' is set to 'EXTOL - EDI Outbound Collaborations'. The 'Process Script' field is filled with 'TL\_850\_to\_JDE\_Business\_Process\_092914Version: 1.0\_SRH' and has a 'Browse' button to its right. Below these fields is a 'Profile Mappings' section with a table that has three columns: 'Parameter', 'Type', and 'Value'. The table is currently empty. At the bottom of the dialog is an 'Acknowledgement Error Codes' section, also empty. The 'Ok' and 'Cancel' buttons are at the bottom right.

Parameter	Type	Value
-----------	------	-------